

POINT OF USE

Thermostatic Temperature Controlled Handwashing

LavAdvantage



FEATURES

- **0.2 GPM turn on flow**
Lowest turn-on specification across more models than any other electric tankless manufacturer
- **Active energy management with power modulating controls**
- **Microprocessor temperature control with digital display for thermostatic accuracy +/-1°F**
- **Field adjustable set point range between 70-140°F**
Special settings of higher or lower range available based on options
- **Silent operation** (except for SPEX0122240T)
- **Mounts in any orientation**
- **Flow meter activates heater only on demand**
- **No standby heat loss**
- **Install unit at point-of-use to eliminate long pipe runs**
- **Eliminate costly mixing valve** (check local codes)
- **Easy installation**
Only one cold or hot water line need be brought to installation
- **High temperature limit switch**
- **Booster up to 180°F** (S option)
- **Warranty, five (5) years limited on leaks, one (1) year parts**
- **Compact size fits almost anywhere for flexible installation; suitable for ADA compliant facilities**

NO LEAD*



*The wetted surface of this product contacted by water contains less than 0.25% lead and meets ANSI/NSF 372



**ENDLESS
HOT WATER**



**SAVE
WATER**



**SAVE
SPACE**



**SAVE
ENERGY**



**SAVE
MONEY**



Eemax, 400 Captain Neville Drive, Suite 1, Waterbury, CT 06705
(800) 543-6163 Toll Free
info@eemaxinc.com | www.eemax.com

© 2017 Eemax, Inc. All Rights Reserved. EX09001-73 REV 2018-01

POINT OF USE

Thermostatic Temperature Controlled Handwashing

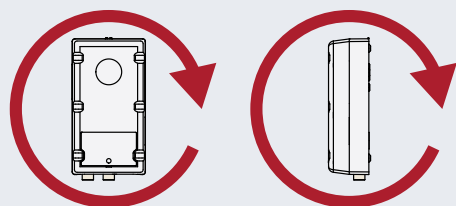
LavAdvantage Models

	Features Available	kW	AMPS	TURN ON (GPM)	RECOM'D WIRE SIZE (75°C/CU)	TEMPERATURE RISE					
						0.25 GPM	0.35 GPM	0.5 GPM	1.0 GPM	2.0 GPM	3.0 GPM
VOLTS 120											
SPEX1812T	EE, S	1.8	15	0.2	14 AWG	61°	35°	25°	12°	6°	4°
SPEX2412T	EE, S	2.4	20	0.2	14 AWG	82°	47°	33°	16°	8°	5°
SPEX3012T	EE, S	3.0	25	0.2	12 AWG	102°	59°	41°	20°	10°	7°
SPEX3512T	EE, ML, S	3.5	29	0.2	10 AWG	†	68°	48°	24°	12°	8°
VOLTS 240*											
SPEX35T	EE, ML, S	3.5	15	0.2	14 AWG	†	68°	48°	24°	12°	8°
SPEX48T	EE, ML, S	4.8	20	0.2	14 AWG	†	94°	66°	33°	16°	11°
SPEX55T	EE, ML, S	5.5	23	0.2	12 AWG	†	†	75°	38°	19°	13°
SPEX65T	EE, ML, S	6.5	27	0.2	12 AWG	†	†	89°	44°	22°	15°
SPEX75T	EE, ML, S	7.5	32	0.2	10 AWG	†	†	102°	51°	26°	17°
SPEX95T	EE, ML, S	9.5	40	0.2	8 AWG	†	†	†	65°	32°	22°
SPEX012240T	EE, ML, S	11.5	48	0.2	8 AWG	†	†	†	79°	39°	26°
VOLTS 208 Single Phase											
SPEX3208T	ML	3.0	15	0.2	14 AWG	102°	59°	41°	20°	10°	7°
SPEX4208T	EE, ML, S	4.1	20	0.2	14 AWG	†	80°	56°	28°	14°	9°
SPEX8208T	EE, ML, S	8.3	40	0.2	8 AWG	†	†	†	57°	28°	19°
VOLTS 277											
SPEX3277T	EE, ML, S	3.0	11	0.2	14 AWG	102°	59°	41°	20°	10°	7°
SPEX4277T	EE, ML, S	4.1	15	0.2	14 AWG	†	80°	56°	28°	14°	9°
SPEX60T	EE, ML, S	6.0	22	0.2	12 AWG	†	†	82°	41°	20°	14°
SPEX80T	EE, ML, S	8.0	29	0.2	10 AWG	†	†	†	55°	27°	18°
SPEX90T	EE, ML, S	9.0	33	0.2	10 AWG	†	†	†	61°	31°	20°
SPEX100T	EE, ML, S	10.0	36	0.2	8 AWG	†	†	†	68°	34°	23°

* 240V units can be used on 208V single phase with 25% reduced temperature output. Please note per UL standards the rating plate and installation instructions will all be according to a 208V to 240V single phase applied voltage. Check with local officials prior to derating the electrical infrastructure.

† Temperature electronically limited to factory set maximum temperature. Models with additional features (EE, ML, or S suffix) have alternate maximum temperatures.

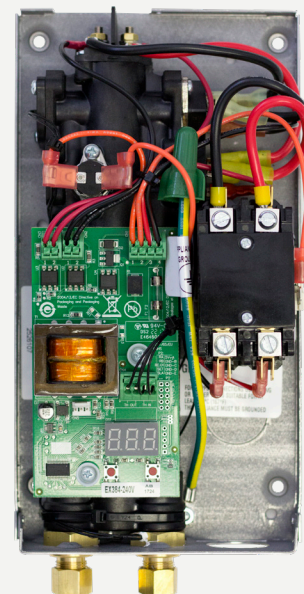
MOUNT IN ANY DIRECTION



LavAdvantage

Suffix Definitions

- EE Emergency Eyewash.**
Meets ANSI tepid water requirements. Max temperature 90°F.
- ML Multiple Lavatory.** Factory set to 110°F.
- S Sanitation.** Factory set not to exceed temperature of 180°F.



PRODUCT INTERIOR



DISPLAY PANEL